




Remarks:

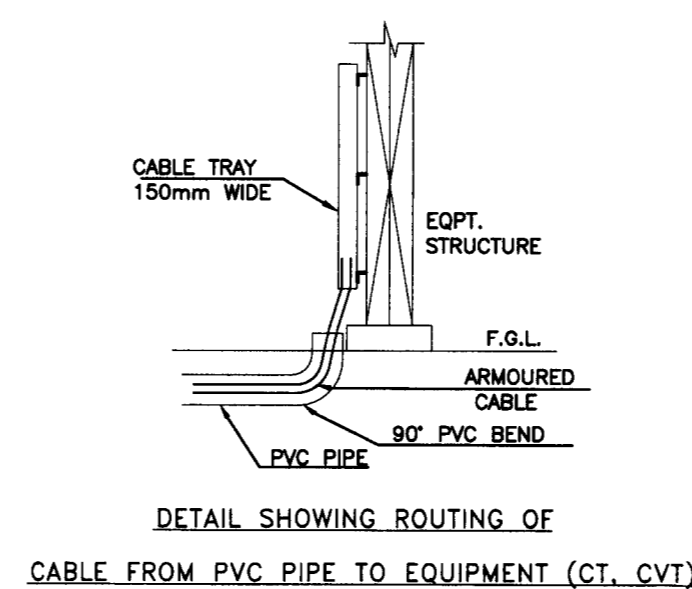
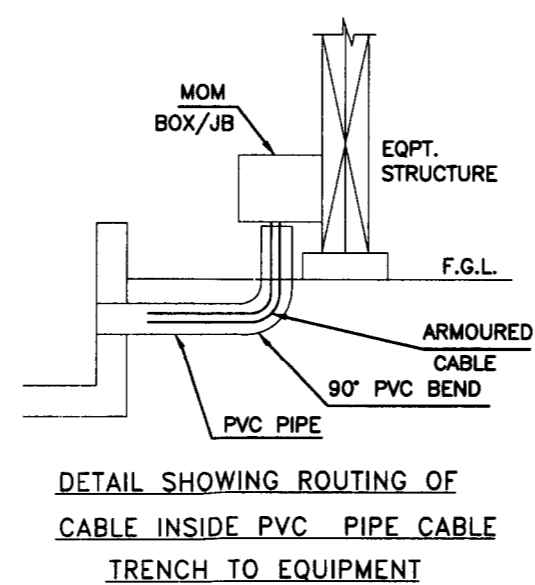
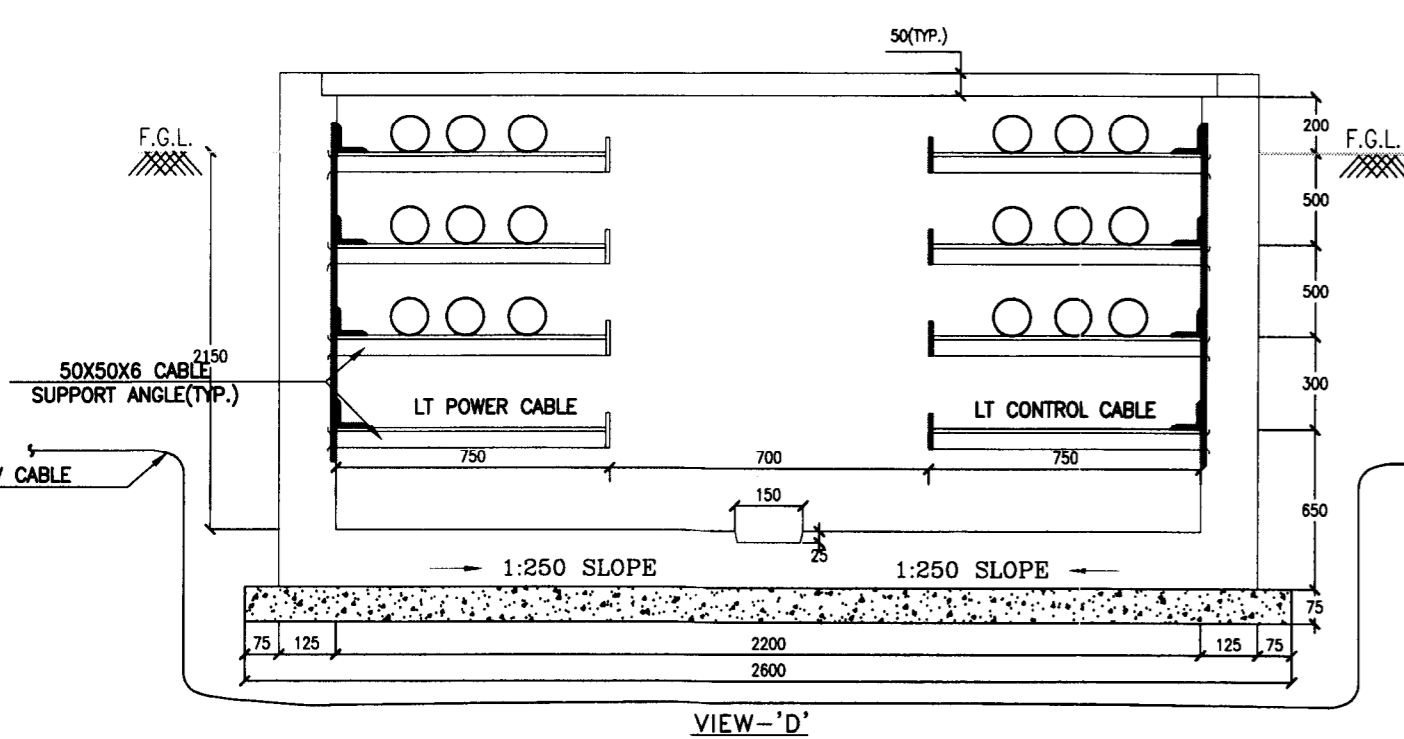
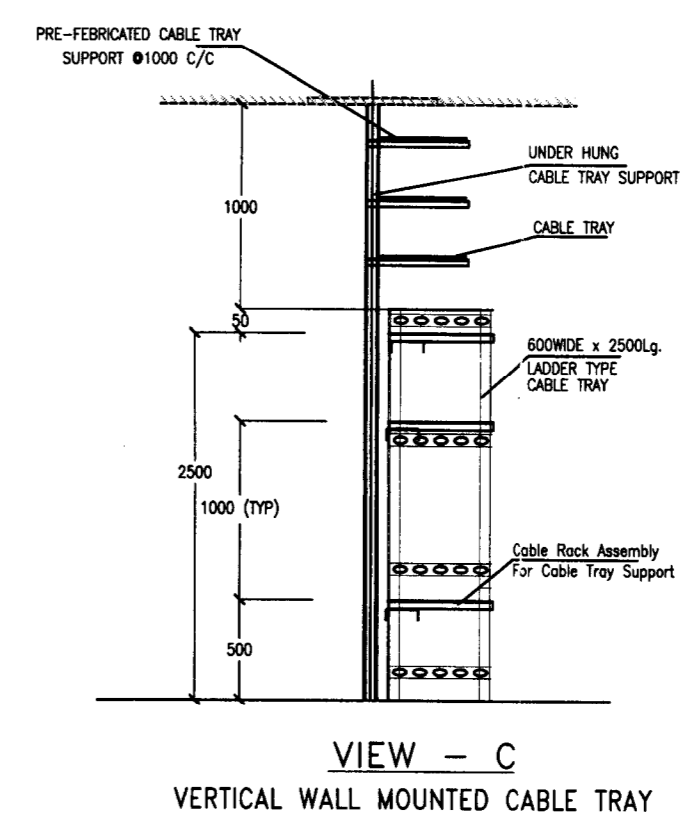
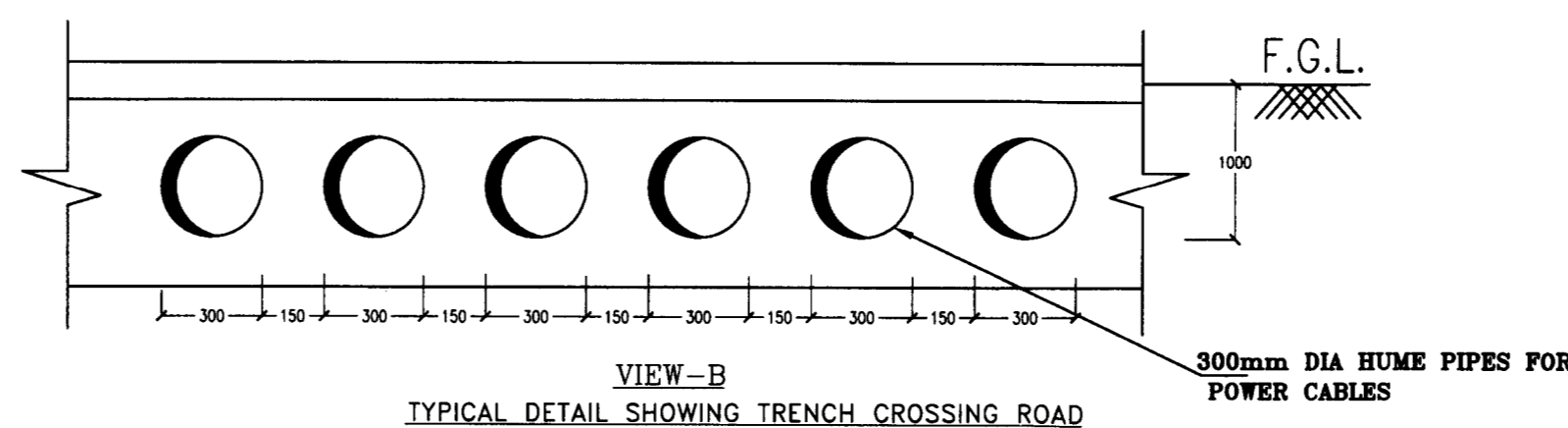
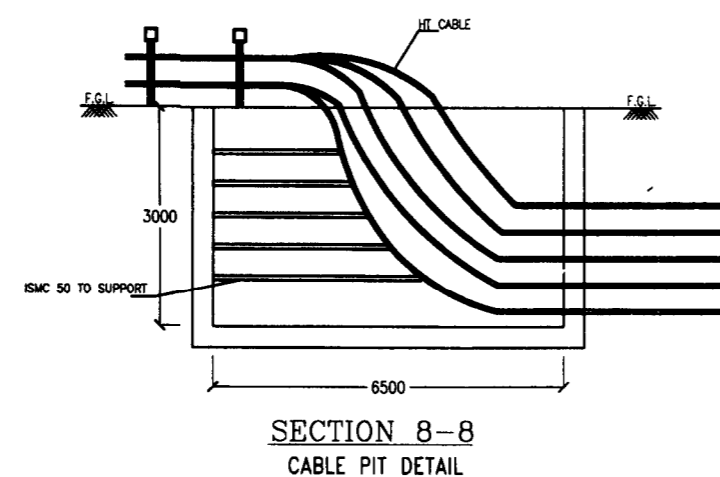
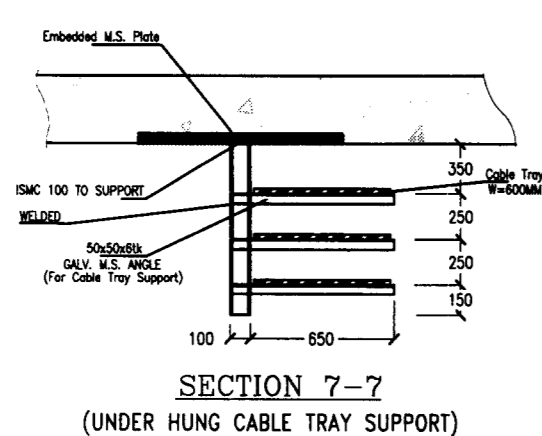
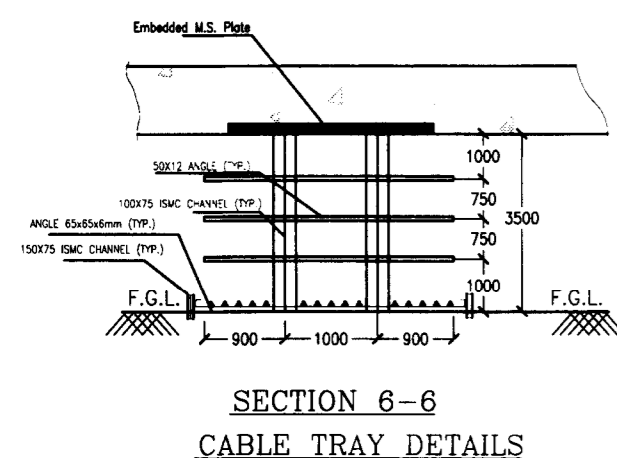
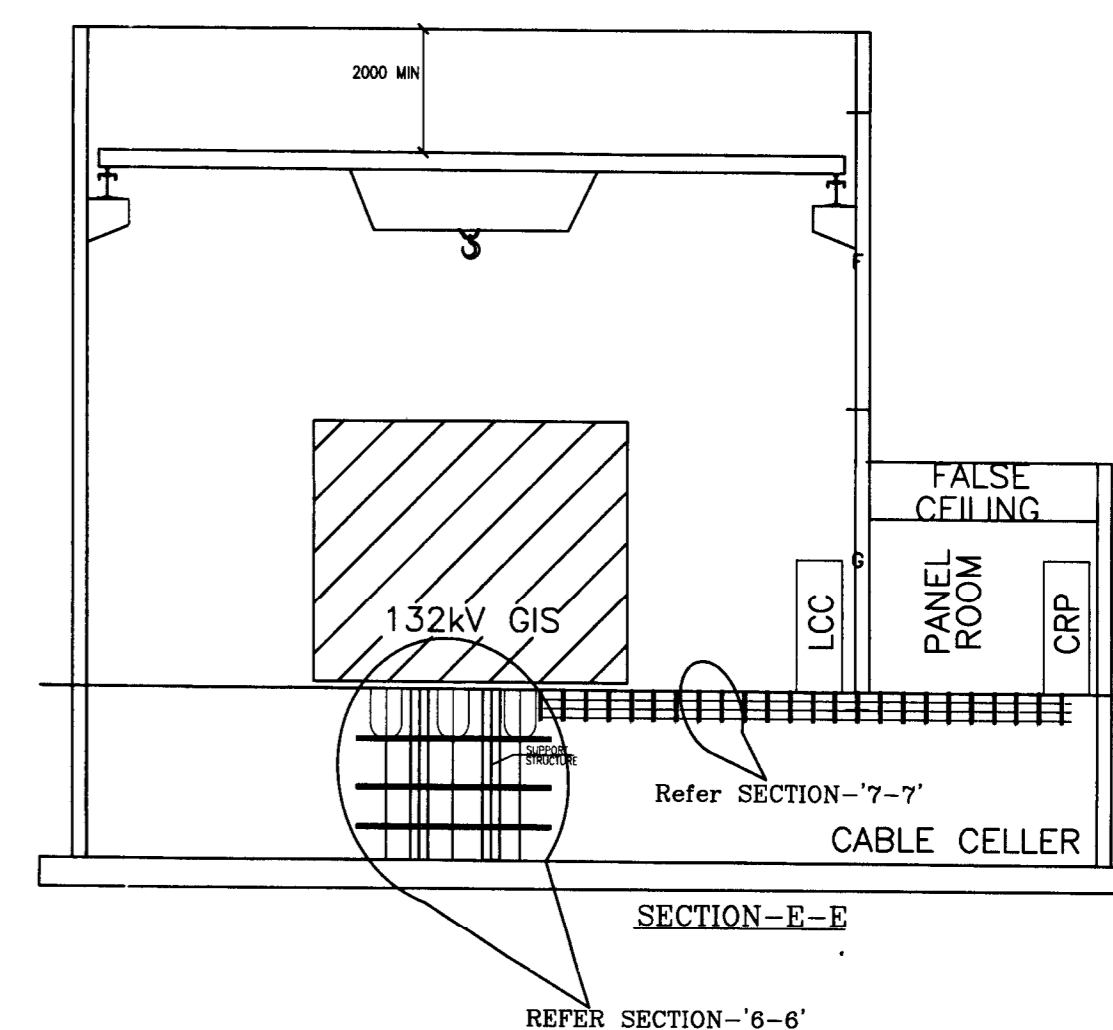
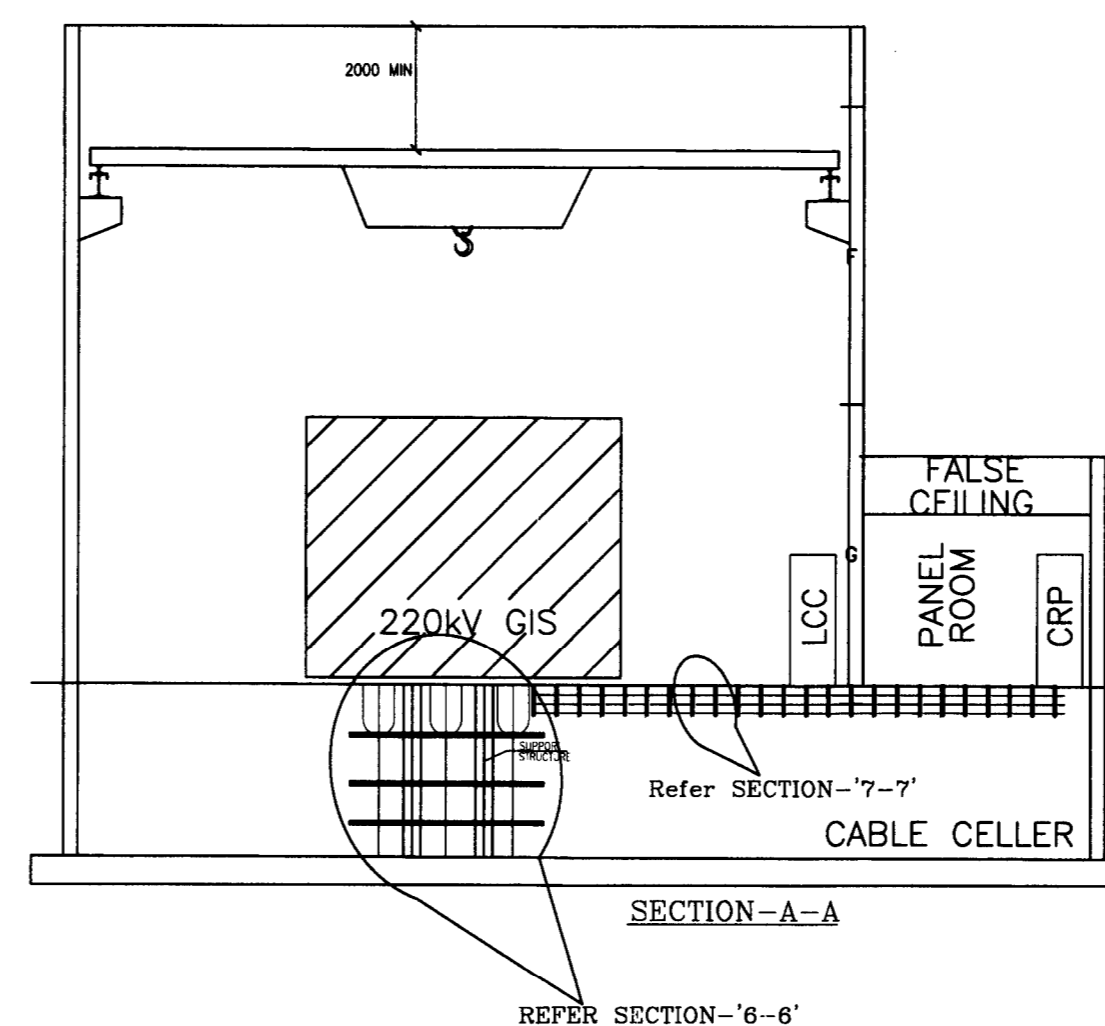
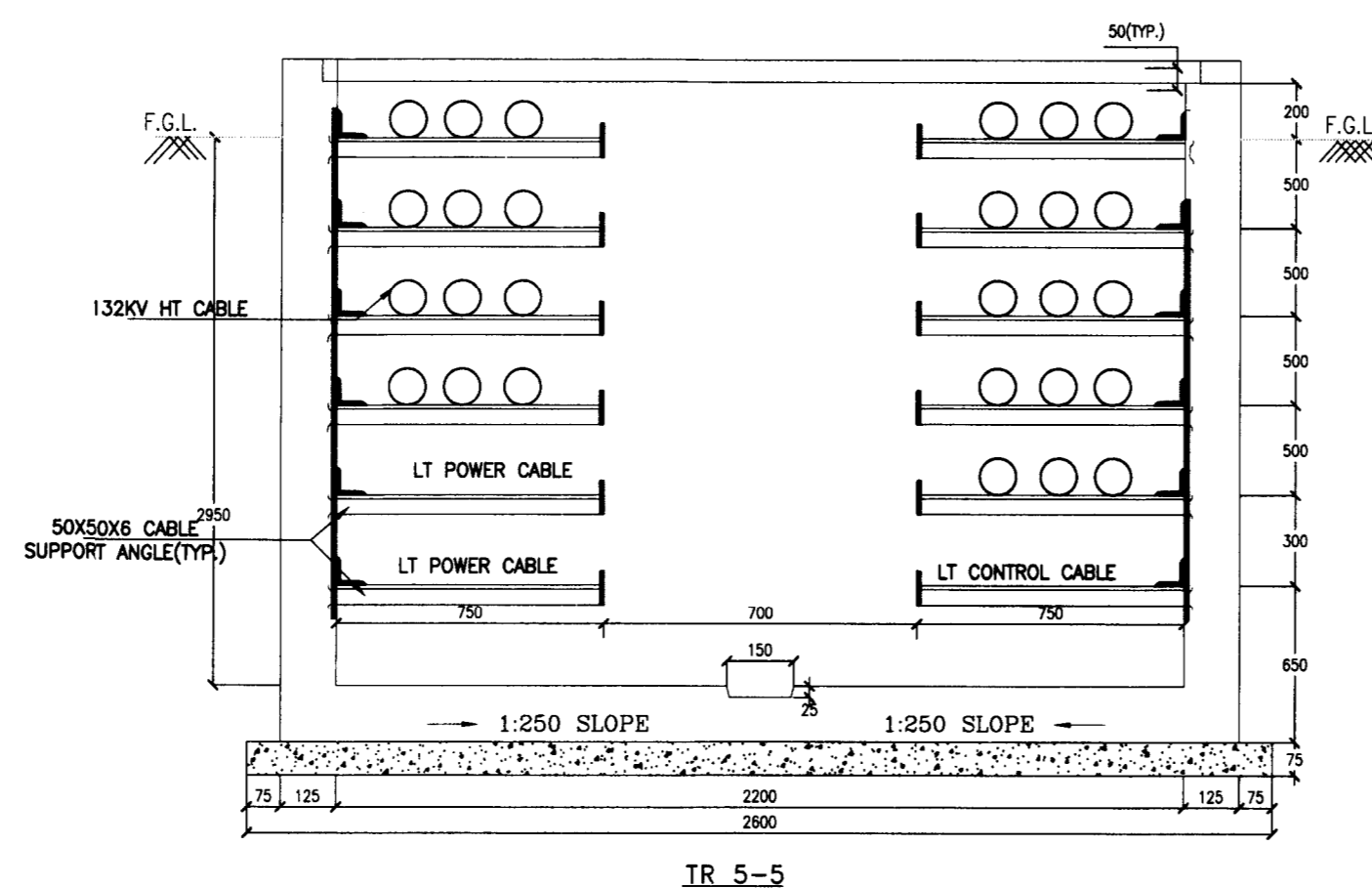
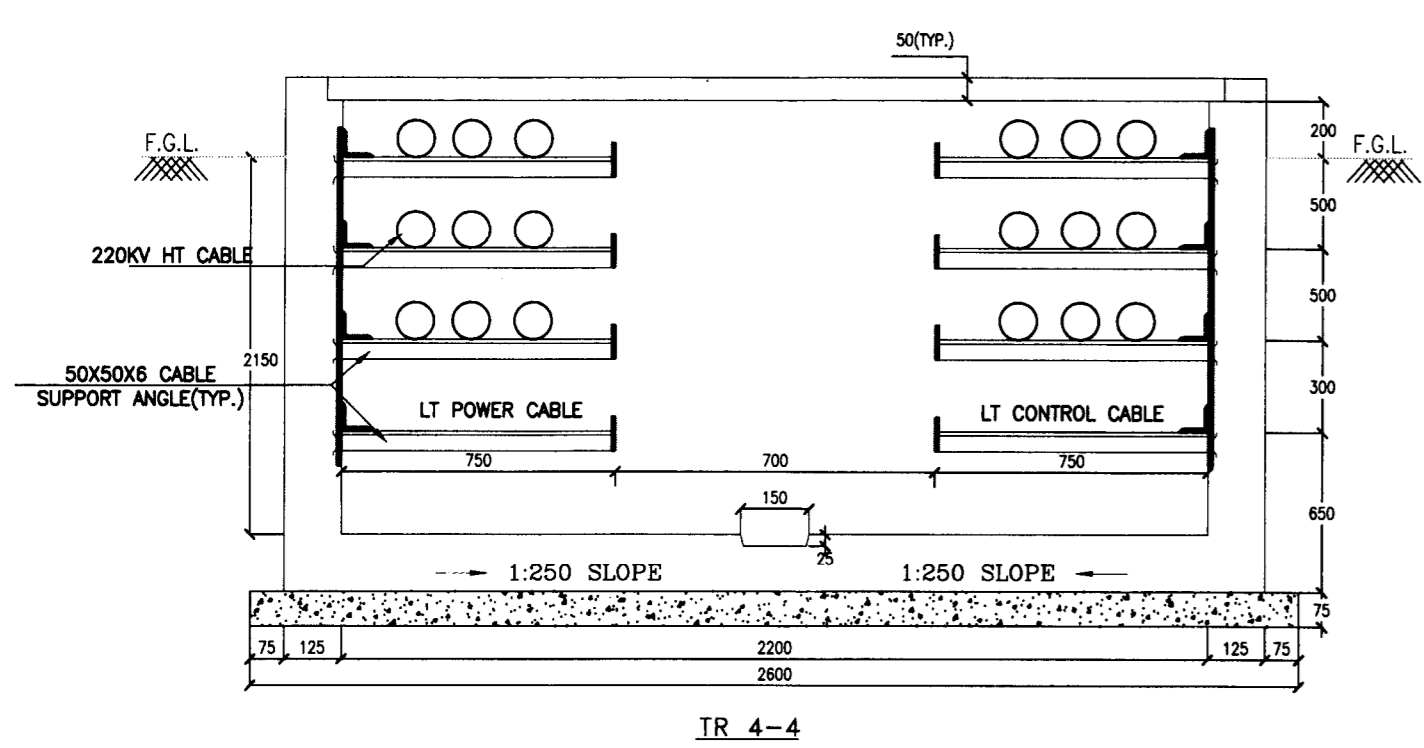
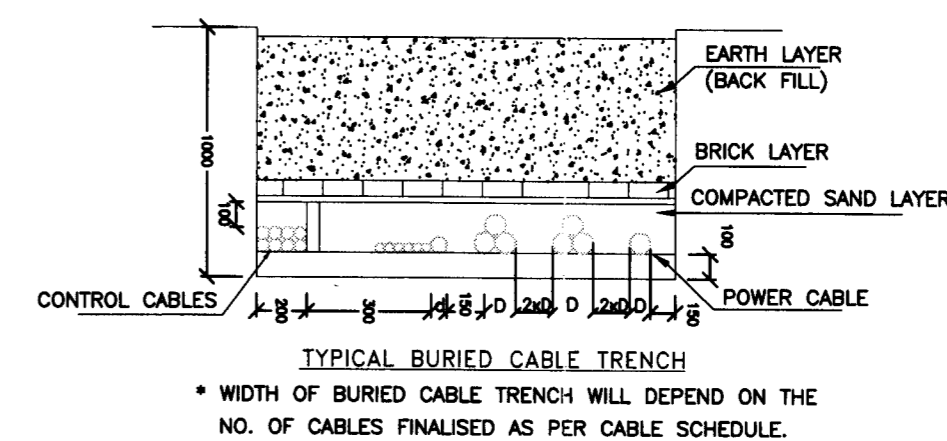
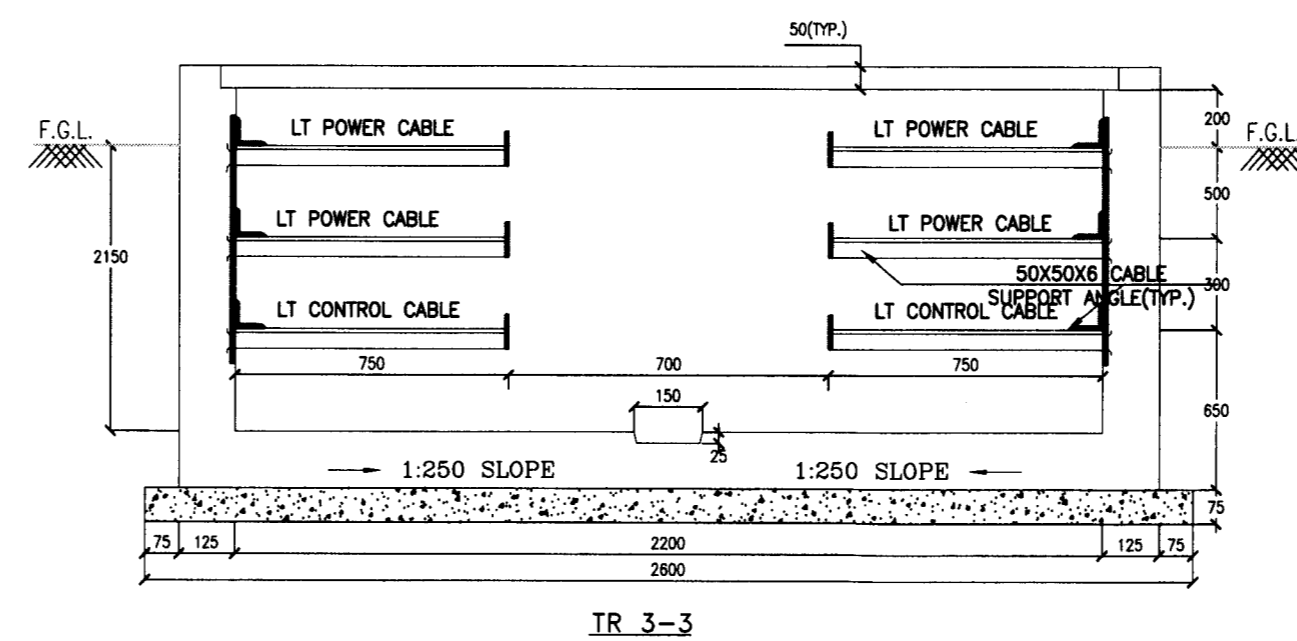
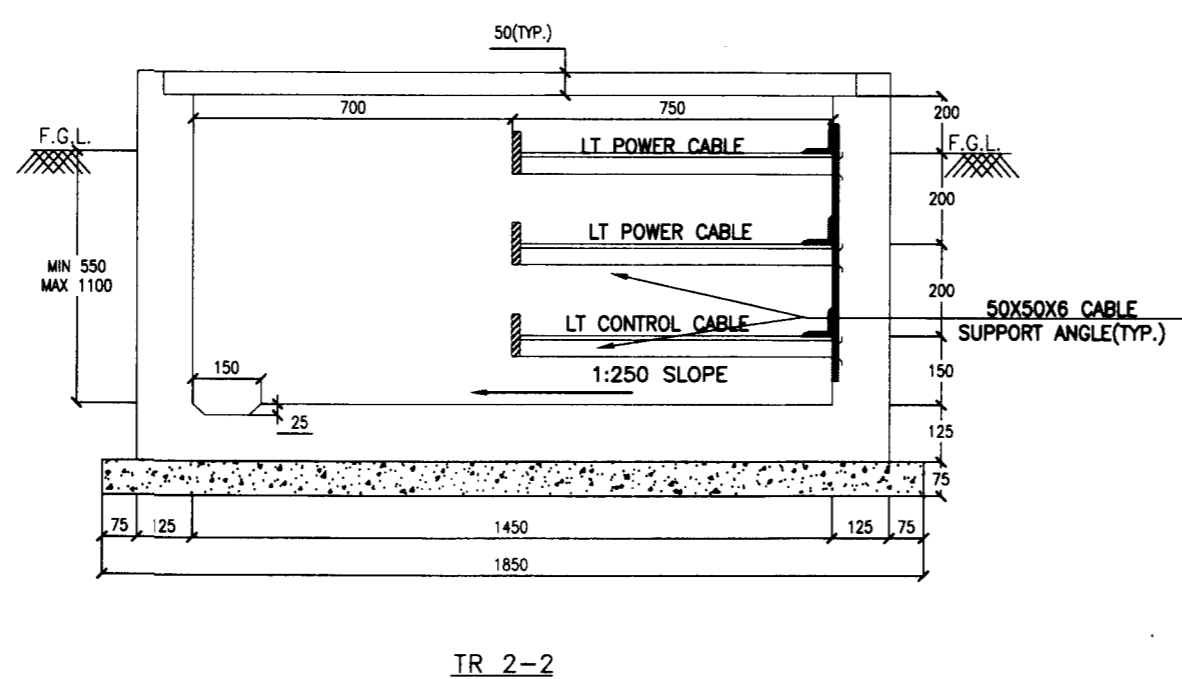
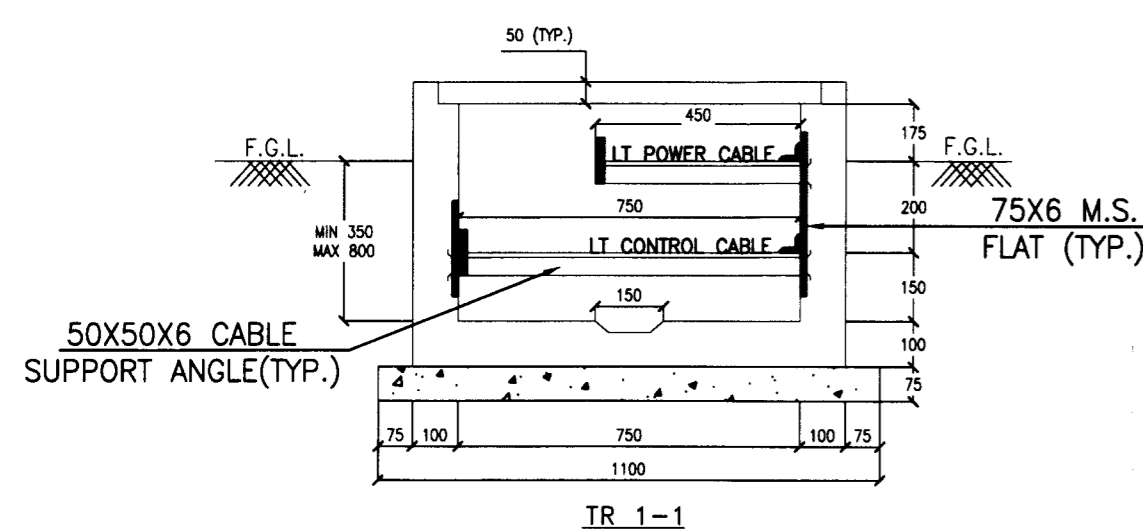
1. The slope of the cable trench is not shown and the position of humps ~~there~~ are not marked
2. The drawing is approved for ~~the~~ electrical design of the cable branches required for the civil design of the trench. It shall be got approved from Civil wing.

Office of The Superintending Engineer  
Electricity 765/400KV Substation Design Circle-I,  
UP Power Transmission Corporation Limited  
11th Floor, Shakti Bhawan Extn. Lucknow

APPROVED

*Amr* AE EE SE

		TENDER SINGLE LINE DIAGRAM 400/220/132KV GIS S/S																		
REF. DRG. NO.		TITLE																		
LOI NO. : 1311/ESD-8/126/II/400KV SHAMLI dated 14.11.2018																				
ADDITIONAL INFORMATION R.O.C.		प्रवेश/परिचयना का नाम UTTAR PRADESH POWER TRANSMISSION CORPORATION LIMITED NAME OF CUSTOMER / PROJECT CORPORATION LIMITED 400/220/132KV GIS SUBSTATION AT SHAMLI, (U.P.)																		
STATUS OF DRAWING CONTRACT																				
DISTRIBUTION OF PRINTS		 भारत भारी इलेक्ट्रिकल लिमिटेड भारतीय भारी विद्युत निगम BHARAT HEAVY ELECTRICALS LTD. TRANSMISSION PROJECTS DIVISION																		
REV.	DATE	ALTERED CHECKED APPROVED	प्रमाण डी.टी. 422 डी.टी. CODE	 अनुपात / SCALE मर्क डी.टी. CWD CODE	<table><tr><td>कार्य नाम</td><td>स्थिति / SIGNAL</td><td>दि. / DATE</td></tr><tr><td>SY</td><td>-SIGNED-</td><td>24.07.19</td></tr><tr><td>सिस्टम</td><td>-SIGNED-</td><td>24.07.19</td></tr><tr><td>कार्य प्रकार</td><td>-SIGNED-</td><td>24.07.19</td></tr><tr><td>SKS</td><td>-SIGNED-</td><td>24.07.19</td></tr></table>	कार्य नाम	स्थिति / SIGNAL	दि. / DATE	SY	-SIGNED-	24.07.19	सिस्टम	-SIGNED-	24.07.19	कार्य प्रकार	-SIGNED-	24.07.19	SKS	-SIGNED-	24.07.19
कार्य नाम	स्थिति / SIGNAL	दि. / DATE																		
SY	-SIGNED-	24.07.19																		
सिस्टम	-SIGNED-	24.07.19																		
कार्य प्रकार	-SIGNED-	24.07.19																		
SKS	-SIGNED-	24.07.19																		
ZONE		कर्माचार्य/TITLE 400/220/132KV TRENCH LAYOUT-SHAMLI		पूर्वा.क्र./DRAWING NO. TB-2-406-316-010 00 पृष्ठ क्र./SHEET No.01 कुल पृष्ठ./NEXT SHEET 02																



Approved for size of cable trench only  
Designed the same shall be get approved from  
Civil Wing.  
Chief of The Superintending Engineer,  
Electricity 165/44 KV Substation Design Circle,  
UP Power Transmission Corporation Limited  
11th Floor, Shakti Bhawan Extn. Lucknow

APPROVED

AE EE

		TENDER SINGLE LINE DIAGRAM 400/220/132KV GIS S/S	
REF. DRC. NO.		TITLE	
LOI No. : 1311/ESD-8/128/III/400KV SHAMLI dated 14.11.2018			
ADDITIONAL INFORMATION W.O.No.		उत्तर प्रदेश बिजली निगम NAME OF CUSTOMER / PROJECT UTTAR PRADESH POWER TRANSMISSION CORPORATION LIMITED	
STATUS OF DRAWING		400/220/132KV GIS SUBSTATION AT SHAMLI (U.P.)	
DISTRIBUTION OF PRINTS		400/220/132KV GIS SUBSTATION AT SHAMLI (U.P.)	
REVISIONS NO. DATE BY 1 10/11/2018 BY 2 11/11/2018 BY		धारा 101 इलेक्ट्रिकल सिस्टम भारतीय बिजली निगम BHARAT HEAVY ELECTRICALS LTD. TRANSMISSION PROJECTS DIVISION	
CHECKED APPROVED		ड्रिंग / SCALE 1:1 1:1	
ZONE		ड्राइंग / DRAWING NO. 400/220/132KV TRENCH LAYOUT-SHAMLI TB-2-406-316-010	